

DIRECTIONS – PUBLIC TRANSPORT

From the Airport

Terminal A/B/C – Terminal Rail Station

- S11 commuter train ⇒ Bergisch Gladbach

to Düsseldorf Main Station

From there you can take any underground lines listed below.



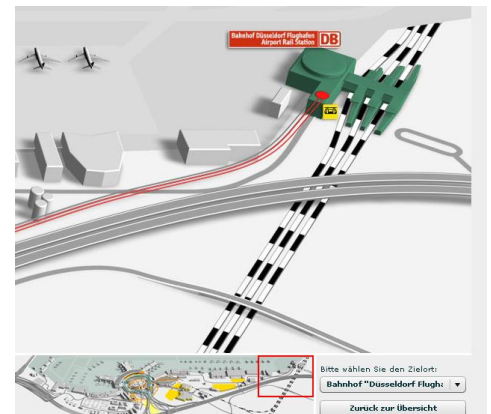
Source: <http://www.flughafen-duesseldorf.de/dus/lageplaene/>

Airport Rail Station

There is a frequent service of regional trains as well as commuter trains to Düsseldorf main station:

- RE 1 ⇒ Aachen Hbf
- RE 3 ⇒ Düsseldorf Hbf
- RE 5 ⇒ Koblenz Hbf
- RE 6 ⇒ Düsseldorf Hbf
- RE 11 ⇒ Düsseldorf Hbf
- S 1 ⇒ Solingen Hbf

From there you can take any underground lines listed below.
Get off at the Steinstraße/Königsallee station



Source: <http://www.flughafen-duesseldorf.de/dus/lageplaene/>

From Düsseldorf Main Station

- U 74 ⇒ Düsseldorf Lörriek
- U 75 ⇒ Neuss
- U 76 ⇒ Krefeld
- U 77 ⇒ Düsseldorf Seestern
- U 78 ⇒ Düsseldorf Messe/Rheinstadion
- U 79 ⇒ Duisburg

Get off at the second stop, Steinstraße/Königsallee.

Please take the exit Steinstraße/Königsallee or use the elevator from the platform to Steinstraße directly.

Further information on www.rheinbahn.de.

BY CAB

A ride to Steinstraße will amount to € 25 approx.